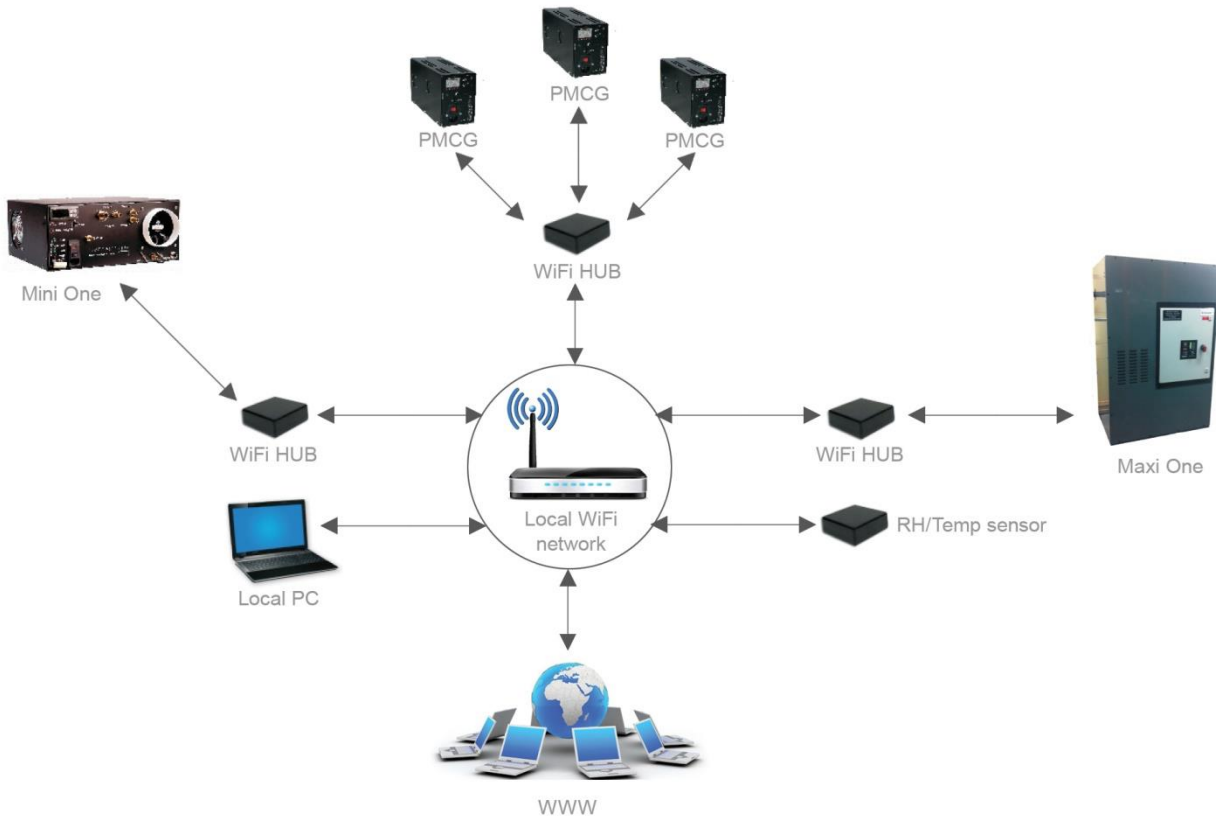


NETWORK

REMOTE MONITORING

Our network system allows the collection of data from all the machines and other peripherals in the gallery.



The most basic system allows to connect all Preservatech's devices to a local PC where the user can check the actual status of a device as well as change the parameters.

Our more advanced system allows the collection of all data onto our internet server where the client can read actual status as well as historical data. This system also allows the change of parameters for each machine connected to the network. Thanks to this system, the client has access to the data from any place with internet access through any web able device.



The machines are connected to the network through HUBS. A single HUB can accommodate up to 8 devices. The HUB's utilize the existing wireless WiFi network or wired LAN network.

Stand-alone sensors don't need to be connected to the HUB's, they are connected to the WiFi network directly but the cannot use wired LAN service.